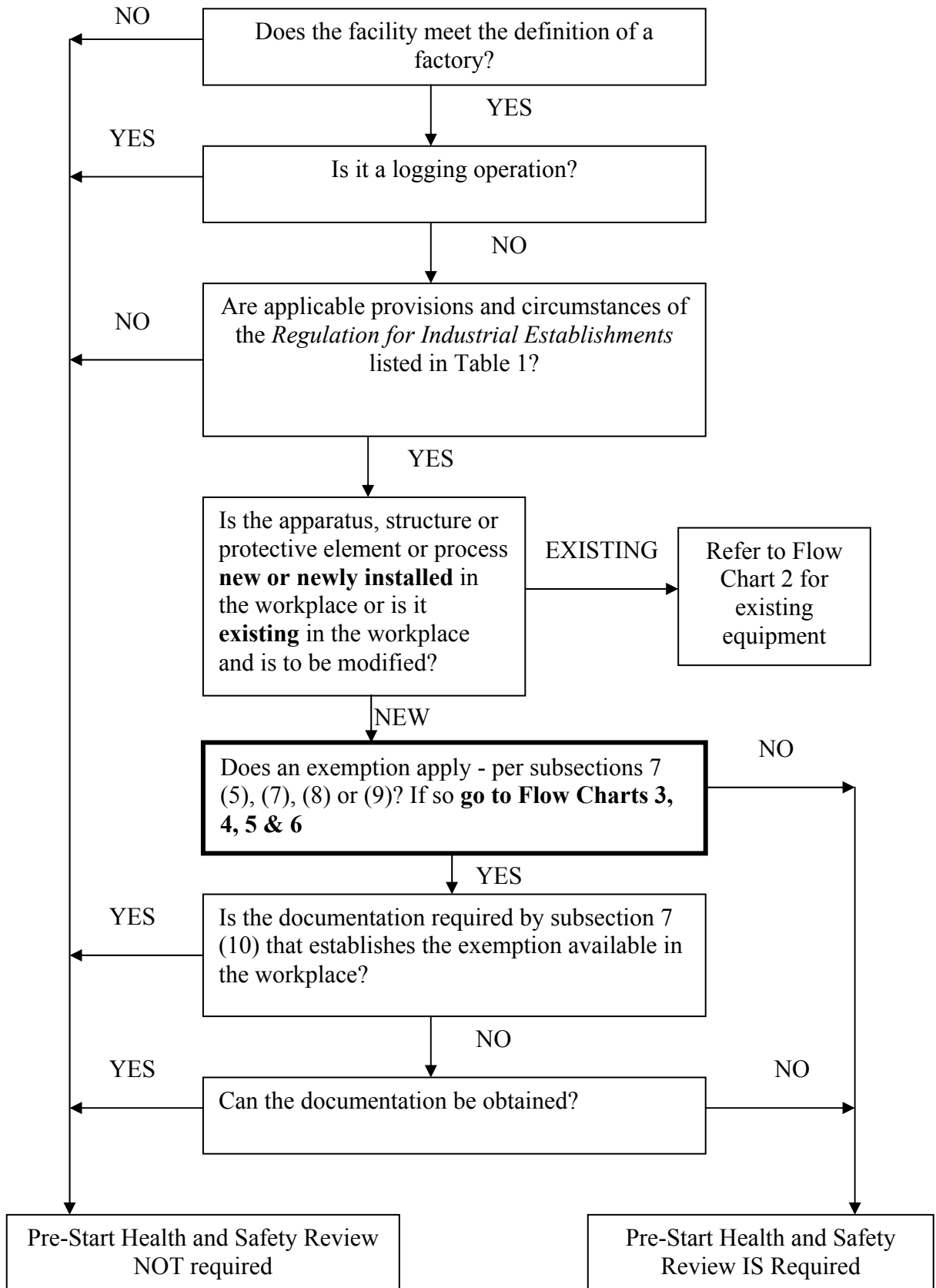


Flow Chart 1 - When Is a Pre-Start Health and Safety Review Required?



What about modifications to existing equipment?

There are several steps to consider if the employer is planning modifications to an existing apparatus, structure, protective element or process and the provisions and circumstances in [Table 1](#), Appendix I apply. If one of the three steps described in subsection 7 (2) (b) of the Regulation for Industrial Establishments must be taken to achieve compliance, a Pre-Start Health and Safety Review is required.

Note that if there is a lack of compliance due to intended modifications, but engineering or other control measures would restore compliance, a Pre-Start Health and Safety Review would still be required before an apparatus, structure, protective element or process is used. This requirement is subject to the exemptions specified in the regulation.

The shaded boxes in [Flow Chart 2](#), Existing Equipment, are to be evaluated by a person familiar with the Regulation for Industrial Establishments. Note that an evaluation is not a Pre-Start Health and Safety Review, but merely a way of determining whether a Pre-Start Health and Safety Review is required. For this reason, the person is not required to be a professional engineer.

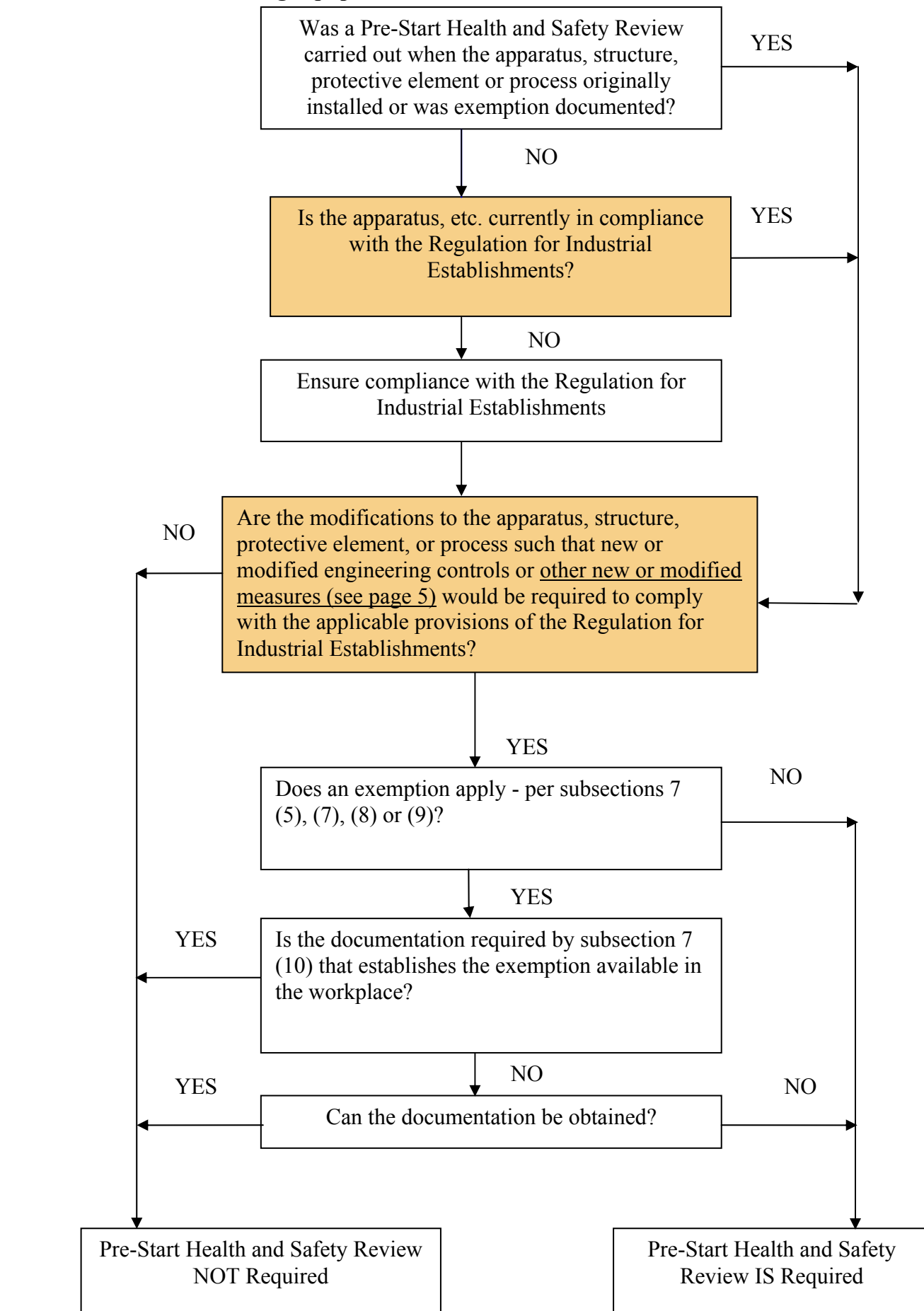
The employer should have a process in place to ensure that an evaluation is conducted to determine whether a Pre-Start Health and Safety Review is required on the modification, or establish the process through documentation.

What are “new or modified measures”?

New or modified measures are those measures referred to in section 87.3 of the Regulation for Industrial Establishments regarding molten material. These measures are to be used in a foundry if engineering controls to prevent spillage are not reasonably possible in the circumstances.

The term “measures” is also used in the Regulation Respecting Control of Exposure to Biological or Chemical Agents (Regulation 833), and regulations respecting designated substances such as Regulations 835 through 846 of the Revised Regulations of Ontario, 1990. For the purposes of section 7 of the Regulation for Industrial Establishments, however, “measures” do not include respirators, work practices, hygiene facilities and practices, or administrative controls.

Flow Chart 2 - Existing Equipment



Are there “exemptions” from the Pre-Start Health and Safety Review requirement?

Even where there is a new apparatus, structure, protective element or process, or one intended to be modified, a Pre-Start Health and Safety Review may not be required depending on certain criteria. Refer to the following Flow Charts 3, 4, 5 and 6.